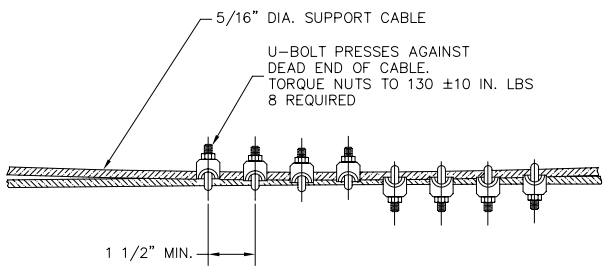
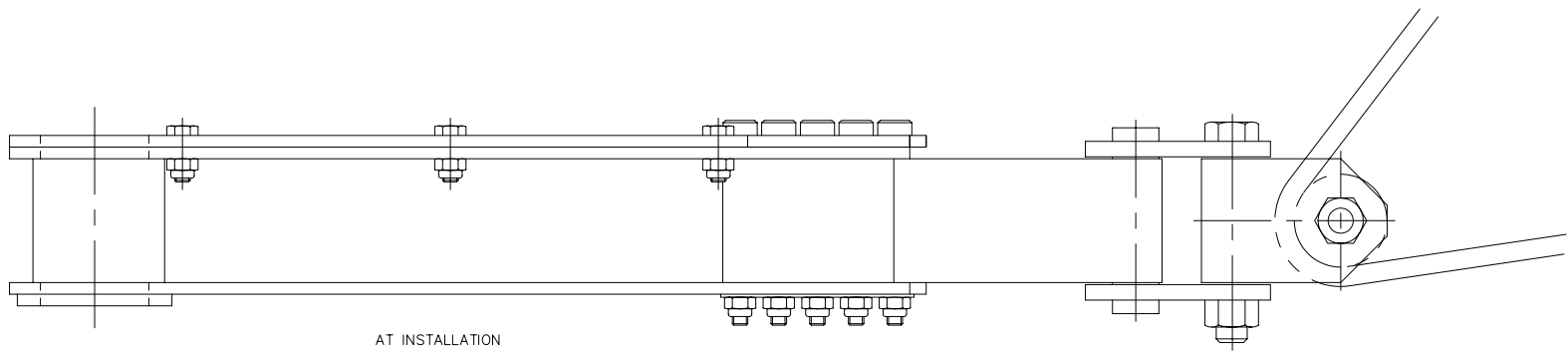


PART NUMBER	USED ON S.O. #	NEXT ASSEMBLY	DIMENSION 'A'	DIMENSION 'B'	ITEM 1 PART NUMBER	QTY. ITEM 4



DETAIL A



- AT INSTALLATION
1. REMOVE BUSHING FROM NET ATTACHMENT FITTING AND INSTALL NET CABLE AROUND BUSHING AS SHOWN IN DETAIL B. REINSTALL BUSHING ON ENERGY ABSORBER.
 2. AFTER NET CABLES HAVE BEEN INSTALLED ON BOTH NET ATTACHMENT FITTINGS LOOSEN CABLE CLAMPS AND ADJUST CABLE LENGTH. AFTER CABLE LENGTH HAS BEEN ADJUSTED FOR INSTALLATION TIGHTEN CABLE CLAMPS AS SHOWN IN DETAIL A

DETAIL B